

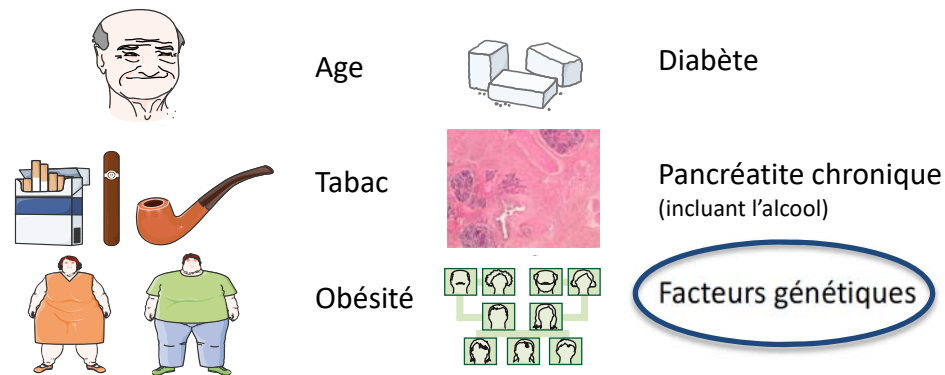
Cohorte CaPaGene

C. Neuzillet (CFP), A. Turpin (GERCOR), E. Fourme (GGC)



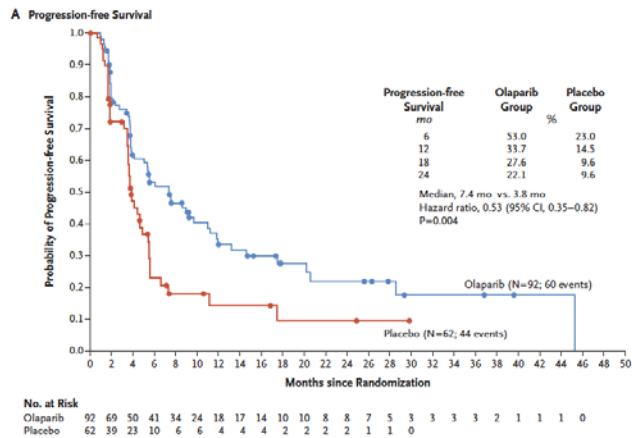
RATIONNEL

- Facteurs de risques
 - Non génétiques
 - Tabac, diabète type II, âge, obésité
 - Génétiques (10%)
 - Prédilection héréditaires aux cancers (BRCA1/2, Lynch...)



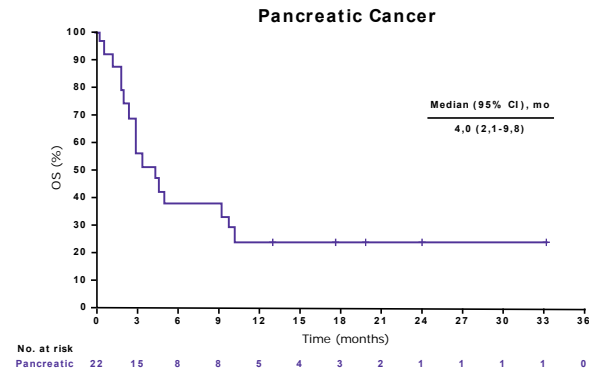
RATIONNEL

ADK pancréatiques
gBRCA1/2 (5-7%)



Golan et al., *N Engl J Med* 2019

ADK pancréatiques MSI (1-2%)



Pembrolizumab

Singhi et al., *Gastroenterology* 2019
KEYNOTE 158 et 164
Diaz et al., *ESMO* 2019, abs 11740

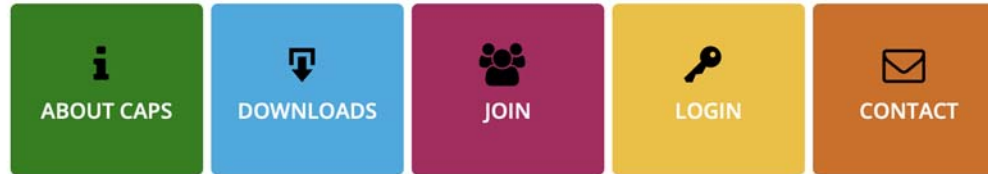
BRCAness somatique (15-17%)
PRODIGE 72 MAZEPPA (P.Hammel)

RATIONNEL

Cohorte internationale CAPS
pour les patients à risque
(porteurs d'altération génétique ou CaPaFa)



PROFESSIONAL



Welcome to the CAPS website!

Welcome to the website of the CANcer of the Pancreas Surveillance (CAPS) consortium and registry.

Many centers around the world are currently performing surveillance for pancreatic cancer in high-risk individuals. Evidence is accumulating that surveillance may lead to the early detection of non-invasive precursor lesions and asymptomatic early stage pancreatic cancer. The feasibility and yield of surveillance has however not yet been proven.

The CAPS consortium has designed a global registry that bundles data from various centers. Its aim is to reach the large number of patients and follow-up data needed to answer current research questions and ultimately develop evidence-based surveillance protocols.

On this website you can find further information regarding the CAPS consortium and registry. If you have any questions, please don't hesitate to contact the registry coordinator.

Yours sincerely, the CAPS steering committee

1158

Inclusions



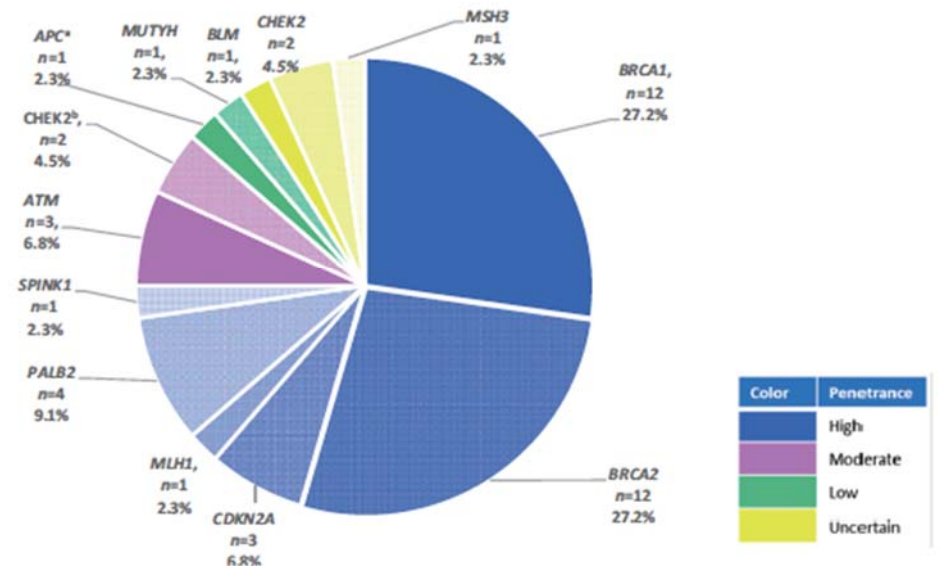
The Beaujon Hospital has joined the registry as the first center from France!

Latest Newsletter

Cohorte Canopé
(A. Turpin – A. Vienot)
ADK Pancréas – eCRF

CaPaGene

- Critère d'inclusion :
 - ≥ 18 ans
 - Diagnostic d'ADKP
 - Variant UV4 ou UV5 constitutionnel dans un des gènes de prédisposition reconnu à l'AP
 - *BRCA1/2, PALB2, CDKN2A, ATM, TP53, Lynch, STK11, PRSS1, GNAS*



Varghese et al., JNCI, 2021

CaPaGene

- Buts :
 - Registre National
 - Meilleure connaissance de l'AP héréditaire
 - Mode de détection de l'altération
 - Corrélations génotype/phénotype
 - Sensibilité aux traitements (platines)
 - Accès aux PARPi/essais cliniques
 - Données de survie
- Financement : AZ
- Déploiement : T1 2022
- Comité de pilotage :
 - 1 CFP, 2 GERCOR, 2 UCGI, 2 FFCD, 6 GGC

